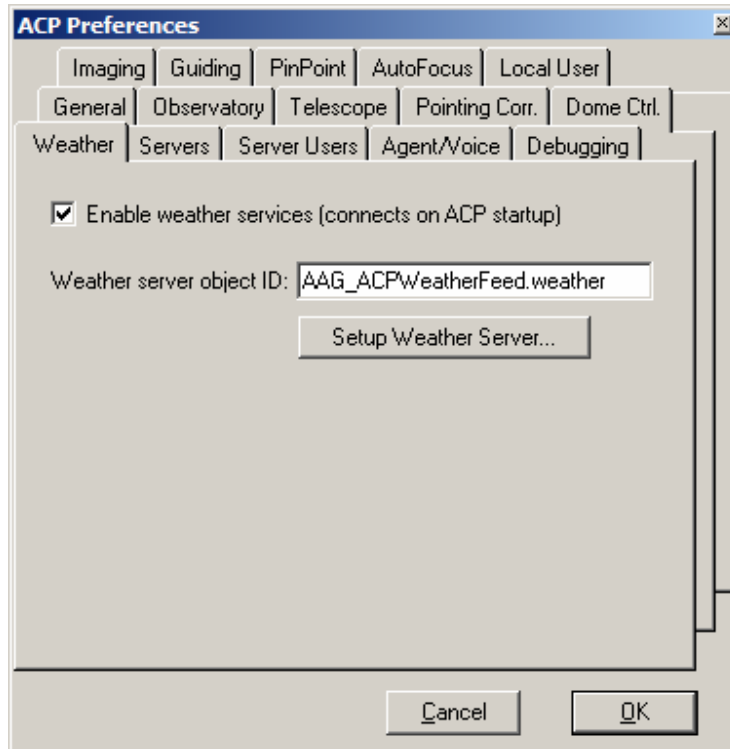


## AAG\_ACPWeatherFeed Module

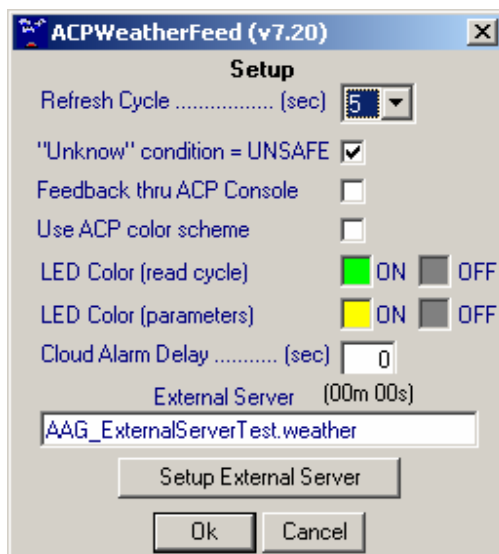
The **AAG\_ACPWeatherFeed.exe** is a weather server for ACP 5.1 and it is included in the installation of AAG\_CloudWatcher v7.xx.xxx.

To activate this weather server, do the following:

1. Select menu option **ACP / Preferences**;
2. Select **Weather TAB**;
3. Select option *Enable weather services(connects on ACP startup)*;
4. Enter **AAG\_ACPWeatherFeed.weather** in the field *Weather server object ID*;



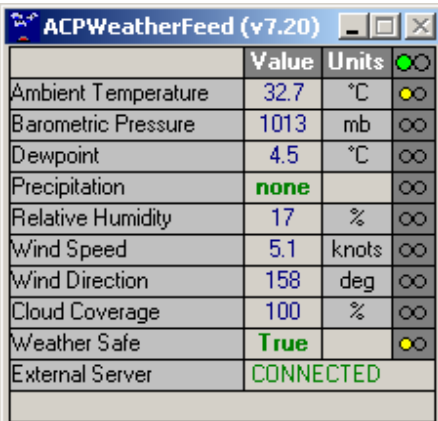
5. Click **Setup Weather Server...** button



- **Refresh Cycle** (default = 5s) corresponds to the information refresh cycle. Note that every time the information is refreshed, the pair of blue LED's at the top RHS of the weather server window blink;
  - If **"Unknown" condition** is selected then an "unknown" condition is considered Unsafe. An "Unknown" condition is usually related to a failure of the serial communication between the PC and the device or a failure of the AAG\_CloudWatcher device due to a power failure, etc.;
  - If **Feedback thru ACP Console** is selected, then a message will be displayed in ACP console every time ACP reads the Safe/Unsafe condition;
  - If **Use ACP color scheme** is selected, then the appearance of the window is similar to that of ACP;
  - **Cloud Alarm Delay** (default = 0 s) is a time delay associated with cloudy conditions. This will delay the response of the system when the Cloudy condition occurs. The system will wait this amount of time before considering this condition Unsafe (provided the Cloudy condition has been selected as unsafe in *Unsafe TAB* of AAG\_CloudWatcher/AAG\_WeatherCenter);
  - **LED color (read cycle)** color corresponding to the ON / OFF state may be changed by clicking over the respective color windows;
  - **LED color (parameters)** color corresponding to the ON / OFF state may be changed by clicking over the respective color windows;
  - **External Server** allows the use of another weather server object ID (default = blank). This will combine the Unsafe/Safe condition of another weather server with the Unsafe/Safe condition provided by this module.
  - **Setup External Server** button allows the user to access the configuration panel of the external server. This button is only visible if there is an external server defined;
6. To connect the weather server, select ACP menu option **Weather / Connect** and the system will automatically activate this weather server which, in turn, will connect to AAG\_CloudWatcher/AAG\_WeatherCenter;
  7. It is important to have selected the correct conditions under **Unsafe TAB** of AAG\_CloudWatcher. It is highly recommended to select at least the **OVERCAST** and **WET & RAIN** conditions of the **Unsafe TAB** of AAG\_CloudWatcher;

This weather server can provide all items of information shown below, *if and only if*, the AAG\_WeatherCenter software is being used.

**Weather Server Window**

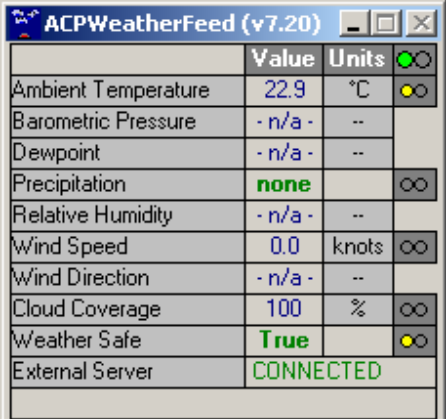


	Value	Units	LED
Ambient Temperature	32.7	°C	●○
Barometric Pressure	1013	mb	○
Dewpoint	4.5	°C	○
Precipitation	none		○
Relative Humidity	17	%	○
Wind Speed	5.1	knots	○
Wind Direction	158	deg	○
Cloud Coverage	100	%	○
Weather Safe	True		●○
External Server	CONNECTED		

Otherwise, when operating with AAG\_CloudWatcher only, the weather server can only supply the following information to ACP:

- Ambient Temperature;
- Precipitation (presence of rain);
- Wind speed (if anemometer is connected);
- Cloud coverage;
- Safe / Unsafe condition;

**Weather Server Window**



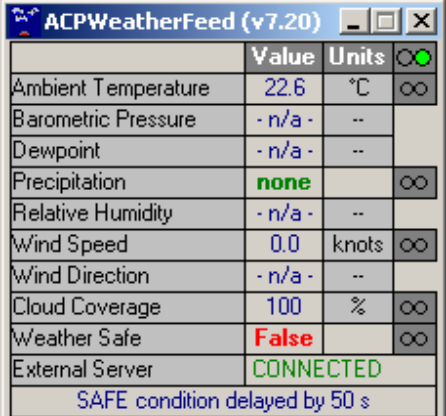
	Value	Units	LEDs
Ambient Temperature	22.9	°C	●●
Barometric Pressure	- n/a -	--	●●
Dewpoint	- n/a -	--	
Precipitation	none	∞	
Relative Humidity	- n/a -	--	
Wind Speed	0.0	knots	∞
Wind Direction	- n/a -	--	
Cloud Coverage	100	%	∞
Weather Safe	True		●●
External Server	CONNECTED		

- The pair of green LED's at the top blink every time new information is obtained from AAG\_CloudWatcher;
- The pairs of yellow LED's blink every time ACP reads the respective information;

**NOTE:**

Whenever the **SAFE Condition Delay Period** is active a message will be displayed as illustrated below.

**Weather Server Window**



	Value	Units	LEDs
Ambient Temperature	22.6	°C	●●
Barometric Pressure	- n/a -	--	∞
Dewpoint	- n/a -	--	
Precipitation	none	∞	
Relative Humidity	- n/a -	--	
Wind Speed	0.0	knots	∞
Wind Direction	- n/a -	--	
Cloud Coverage	100	%	∞
Weather Safe	False		∞
External Server	CONNECTED		
SAFE condition delayed by 50 s			

**IMPORTANT**

If AAG\_WeatherCenter is installed please select option *Emulator connect to AAG\_WeatherCenter* of **General** section of **Setup TAB** of AAG\_WeatherCenter

## External server messages

ACPWeatherFeed (v7.20)			
	Value	Units	
Ambient Temperature	22.9	°C	●○
Barometric Pressure	- n/a -	--	
Dewpoint	- n/a -	--	
Precipitation	none		∞
Relative Humidity	- n/a -	--	
Wind Speed	0.0	knots	∞
Wind Direction	- n/a -	--	
Cloud Coverage	100	%	∞
Weather Safe	True		●○
External Server	NONE		

No external server defined

ACPWeatherFeed (v7.20)			
	Value	Units	
Ambient Temperature	22.9	°C	●○
Barometric Pressure	- n/a -	--	
Dewpoint	- n/a -	--	
Precipitation	none		∞
Relative Humidity	- n/a -	--	
Wind Speed	0.0	knots	∞
Wind Direction	- n/a -	--	
Cloud Coverage	100	%	∞
Weather Safe	True		●○
External Server	CONNECTED		

External server connected and OK

ACPWeatherFeed (v7.20)			
	Value	Units	
Ambient Temperature	22.8	°C	●○
Barometric Pressure	- n/a -	--	
Dewpoint	- n/a -	--	
Precipitation	none		∞
Relative Humidity	- n/a -	--	
Wind Speed	0.0	knots	∞
Wind Direction	- n/a -	--	
Cloud Coverage	100	%	∞
Weather Safe	True		●○
External Server	ERROR		

External server incorrectly defined

ACPWeatherFeed (v7.00)			
Cloud Alarm Delay 60s			●○
	Value	Units	
Ambient Temperature	21.7	°C	∞
Barometric Pressure	- n/a -	--	
Dewpoint	- n/a -	--	
Precipitation	none		∞
Relative Humidity	- n/a -	--	
Wind Speed	0.0	knots	∞
Wind Direction	- n/a -	--	
Cloud Coverage	100	%	∞
Weather Safe	True		∞
External Server	NOT OK (no Safe)		

External server has no Safe property/method